

# Medical Homeopathy InterNational Therapeutic Society

Presentation



Passion for Healing

1



## Research

- ❖ MedHINTS' Research is in the area of Cancer and HIV, especially towards the treatment methods, tools, way of handling the patients in grave conditions. MedHINTS understand through its research both Cancer and HIV are failure of immunity (lack of vital life energy) to maintain the healthy biological processes and tissues. Our research indicate that the causes of Life Energy Depletion is due to Constitutional Error (issues in mind and reflections on the body together which is individualistic to the person) and Human scientific errors like Artificial Radio Emissions (from Power lines, Cell towers, Commercial Electronics, Radar etc), adulteration of food, Usage of Chemicals and preservatives in food.

# Problems

- ❖ Today Scientific world don't recognize the Life energy (Prana) as a basic elemental energy which is fundamental to various possibilities of life creation and maintenance.
- ❖ The present medical system treats the person in fragmented approach and don't see holistic (as one life, one blood and one system approach). Moreover the medicines are based on mere chemical and their primary action, without taking the consideration of reaction of the body to the chemical.
- ❖ Technological inventions are so rapid, without seeing the counter affects on the living organisms as they never understood the ingredients of creation and functioning. Just mechanistic view point of the world is the biggest errors human are committing.

## Solutions

- ❖ MedHINTS research is well advanced Clearly identified the Energy based technologies, mastered and developed tools for energy harvesting into the human system which are
  - 1) Homeopathy to resolve constitutional errors
  - 2) Pranic Healing techniques
  - 3) Meditation
  - 4) Life Energy harvesting by Qi Gong (Chinese Medicine)
  - 5) Built Various Energy harvesting Tools

# What is Homeopathy

- ❖ Homeopathy is a system of natural health care Using the Life (Pranic) Energies of Various Sources

that has been in worldwide use for over 200 years. Homeopathy treats each person as a unique individual.

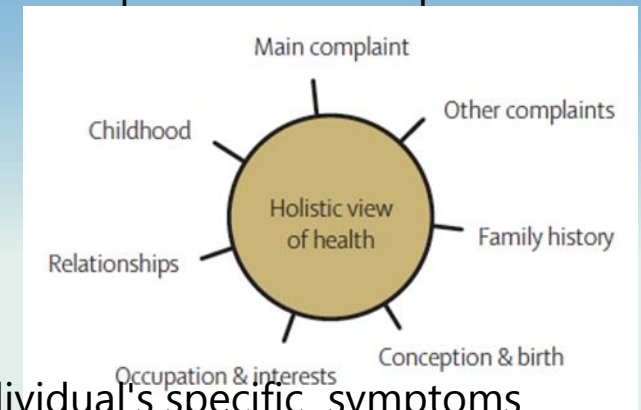
- ❖ Holistic Approach :Treats the Person as a whole  
Homeopathy Medicine stimulates patients own healing ability.

- ❖ Based on the Symptoms of mind and body

A homeopath selects the most appropriate medicine based on the individual's specific symptoms and personal level of health. Homeopathy recognize and categorize Symptoms into Experiential, Intellectual, Emotional, Physical and Pathological symptoms.

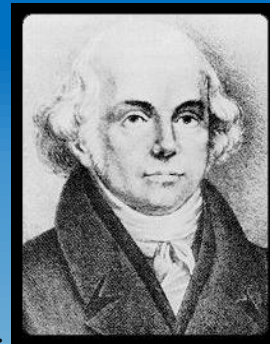
- ❖ Second largest therapeutic system

It is recognized by the World Health Organization as the second largest therapeutic system in use in the world. While it is most popular in India and South America, over thirty million people in Europe, and millions of others around the world, also benefit from its use.



# Laws of Homeopathy

Father of Homeopathy: Samuel Hahnemann, during 1755 - 1843



- ❖ **Homeopathy recognize Laws for Cure** : The name homeopathy, coined by its Founder, Samuel Hahnemann, is derived from the Greek words for 'similar suffering' referring to the 'like cures like' Natures' law of healing. Apart from Law of Similar, Homeopathy treatment is based on Law of Simplex, Law of Minimum dose, Doctrine of Drug Proving, Theory of Chronic Disease, Theory of Vital life Force, Doctrine of Drug- Dynamization. Homeopathic Law of cure align with the Ayurveda law of cure.
- ❖ **Law of healing** :: Homeopathy is a system of medicine works on the principle that 'like cures like'. Same as Ayurveda.
- ❖ **Law of Minimum dose** :: 'the minimum dose' should be employed is based upon the understanding that the stimulus of the medicine. The minute dose means that quantity of a medicine which is though smallest in quantity produces the least possible excitation of the vital force and yet sufficient to effect the necessary change in it.
- ❖ **Direction of cure - Centre to Circumference, top to down, and Important Organ to less Important organ**: Healing progresses from more important organs to less important organs, thus the health of the heart or brain improves before that of less vital organs like the stomach or joints, or someone's asthma clears up before their itchy skin does.
- ❖ **Law of Simplex** : only one - single, simple medicinal substance (life essence) is to be administered in a given case at a time.

# Homeopathic Medicine Sources

- ❖ **Medicine Sources and Groups:** Homeopathic medicines are derived mainly but not limited from plants, minerals, and animals. Medicines also derived from viruses, bacteria, Light, x-ray, also the allopathic medicines in homeopathic potencies and all other possible sources.



- ❖ **Medicines are individualistic, No Mixtures:** Because the makeup of each and every homeopathic remedy essentially consists of its own respective inner Pranic energy, this makes homeopathy VERY individualized. Homeopathy medicines are not mixtures of different sources of medicines.
- ❖ **Preparation of Medicine:** Through a series complex and long processes, known as potentization and succession, the energetic properties of a specific type of substance are extracted and put onto sugar-pellet with different potency.
- ❖ **Medicine contain only Life Energy (Pranic Vibration):** Medicine retains the substance's Life energy and essence. Retain only medical properties but No physical, chemical properties.

## Why is homeopathy so popular?

- ❖ **Nature heals, Medicine enables :** Homeopathic treatment works with your body's own healing powers to bring about health and well being. Medicine enable the body to heal itself.
- ❖ **Treat the patient, Not the disease names:** You are treated as an individual, not as a collection of disease labels.
- ❖ **Aggregated total symptoms, not fragmented approach:** Homeopathy treats all your symptoms at all levels of your being – spiritual (experiential), emotional and physical and finds the 'like cures like' match for them.
- ❖ **Minimum dose, Single Remedy at a time:** Homeopathically prepared remedies, providing the minimum dose, are gentle, subtle and powerful. They are non-addictive, and not tested on animals.
- ❖ **Safe on all levels :** A Safe, Inexpensive, & Profound Way to Heal On All Levels
- ❖ **Elaborate Medicine Spectrum:** Homeopathy has a method to discover precise medicine which is necessary for the patient although it is not available in the market, through the analysis of Plant (family, sub-family, and plant), mineral (Row, and column), Animal (family, sub-family and species) etc.



## Homeopathy Vs

## Ayurveda Vs

## Allopathy

Recognize Law exist for cure

1. Likes Cure Likes
2. Minimum Single Dose
3. Direction of Cure – Center to Circumference

Depends on the Vital Force or Life force or Pranic Energy as the prevailing authority over body and Medicine enable life force to heal

Medicine Spectrum is elaborate include all medicine sources from plants, minerals and animals and others ex: arnica, pulsatilla (plant), sulphur, bromium etc (from minerals), sepia, apis (animals), x-ray, Light (from Imponderables) etc...

Medicines are proven on healthy human being to derive its action and well documented. Once documented they do not change

**Medicine preparation is simple and standard and doctors can prepare. Usually doctors prove the medicine on them selves.**

Identified Law exist for Cure

Recognize Life. Healing power is in Nature, Medicine helps

Medicines are limited to Plants mainly and few minerals. Combinations are allowed and each medicine preparation is different.

Medicines are not proven, but used on sick people directly

**Medicine preparation can be done by doctors**

Recognize No laws

Medicine suppress the disease

Medicines are limited to chemical combinations, rarely plant extracts

Tests are conducted on animals., for pathological changes only. Medicines keep changing, Medicine formulas keep changing.

**Medicines preparation needs laboratories.**

## Need of the Day

- ❖ **Genuine Medical support** : Commercialization of Medicine, Stressful mechanical life, ever increasing material demands and Overall Pollution (physically and mentally) seeking ever Demanding Genuine Medical support or Healing
- ❖ **Right of patient** : Today Sick are at mercy while seeking genuine help.
- ❖ **Humanity**: Giving appropriate medical help is basic humanitarian act
- ❖ **Quality doctors**: Doctors Knowledge and Skills, art can only help the patient
- ❖ **Not enough doctors/healers**: Homeopathy is a Holistic Healing Science., but only in the hands of few insightful doctors. The number of quality doctors is very less, hence the suffering of patients are not attended., hence every case ultimately lands in surgery at the end.



# Difficulties in practicing Homeopathic Medicine

Doctors in Homeopathy today Do not have

- a way to upgrade their knowledge to latest Research work
- Research Doctors don't have the time and reach to educate others
- Existing Software tools are expensive, not affordable by all doctors
- Latest Research works are not part of Present day Software

like Evolutionary Connections across

Medicine kingdoms (animal, Plant, Mineral)

Families of medicines

## Preventive medicine

Chronic disease have to be seen in person's altered perception, peculiarities of the person in behavior, tastes, interests, imaginations, dreams and in every life process.

The chronic picture doesn't change from birth to death

The symptoms of chronic disease ever growing in the body can be healed at any point of life, if the doctor is intelligent enough and patient is willful to take treatment.

Preventive medicine and Curative medicine for the patient is same at any given point of time.

Advanced Homeopathy offer the holistic approach for prevention.

Meditative techniques combined with Homeopathy offer certainty in cure.

# Vision

- Genuine Medical help has to become right of patient
- With Our Social Conscience, We build our systems, Help ourselves
- Human Knowledge is for Peace, Health and for Higher Spiritual Goals
- Let us build a platform (Software) which
  - Accumulate, Analyses, Presents the Medical Knowledge in Easily Comprehensible way
  - Makes it available to every Doctor at his work to help sick
  - Collaborates, Corroborate Path breaking works of many Researchers
  - Results in usage of many new medicines (plants, Minerals, Animal drugs) and the way to use precisely, to rescue the innocent patients from their pains.
- To be part of making INDIA as a healing center for the world, To Spread the peace and show the compassion towards the humanity

## Need of healing Centers

- MedHints understand Mother's womb is a transformation center, where the baby is God.
- Self-realization is a transformation happen under tree / Under ground / in caves, symbolically represent the mother womb
- MedHints understand the soul journey is from bubble to bubble, where bubble provide all the environment required for soul to evolve.
- Mother womb is high cosmic energy center which would help transformation
- The structure of Temple/ masjid / church is signature of womb also brings in high cosmic energy.
- Healing is also a transformation which need a center with high cosmic energy concentration
- MedHints would like to build Healing center based on the above observations.

"Character of Human Being...

Sacrifice, Generosity, Social consciousness, Love and Compassion, peace and Spirituality."

Join us to build Healing center and promote Homeopathy for healing for the cause of humanity.

# MedHints Efforts

## Affordable Homoeopathic Software

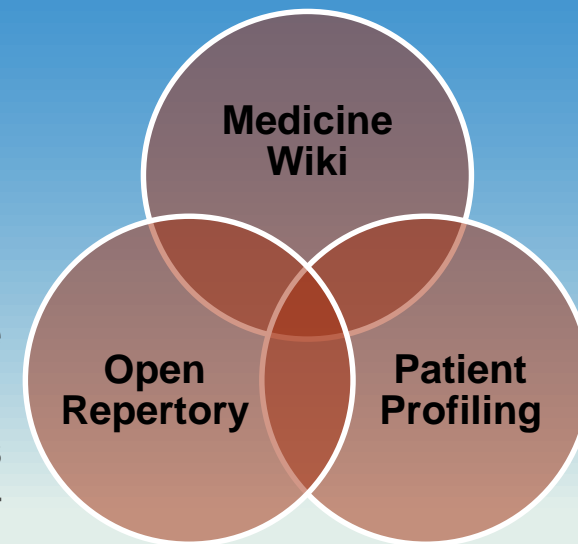
is the need for the day to reach to all the doctors and enable them to work along with latest advancements in homeopathy research. MedHints planned to bring (1) Medical WiKi to bring all the medical research data to one place and allow all the doctor to contribute and grow. (2) Patient Profiling help patient to maintain their record and refer it to who ever doctor they want. (3) Open Repertory helps doctors to use a free comprehensive repertory program in their regular practice which is advanced than the presently available software programs at high cost.



### Litmus

Advanced Homoeopathic Software

To bring Litmus – Analytical Charts which is Advanced Homeopathic Software To include All masters works By taking the data from all the solved cases of expert researchers (ex: From Dr. Mahesh Gandhi and his team)

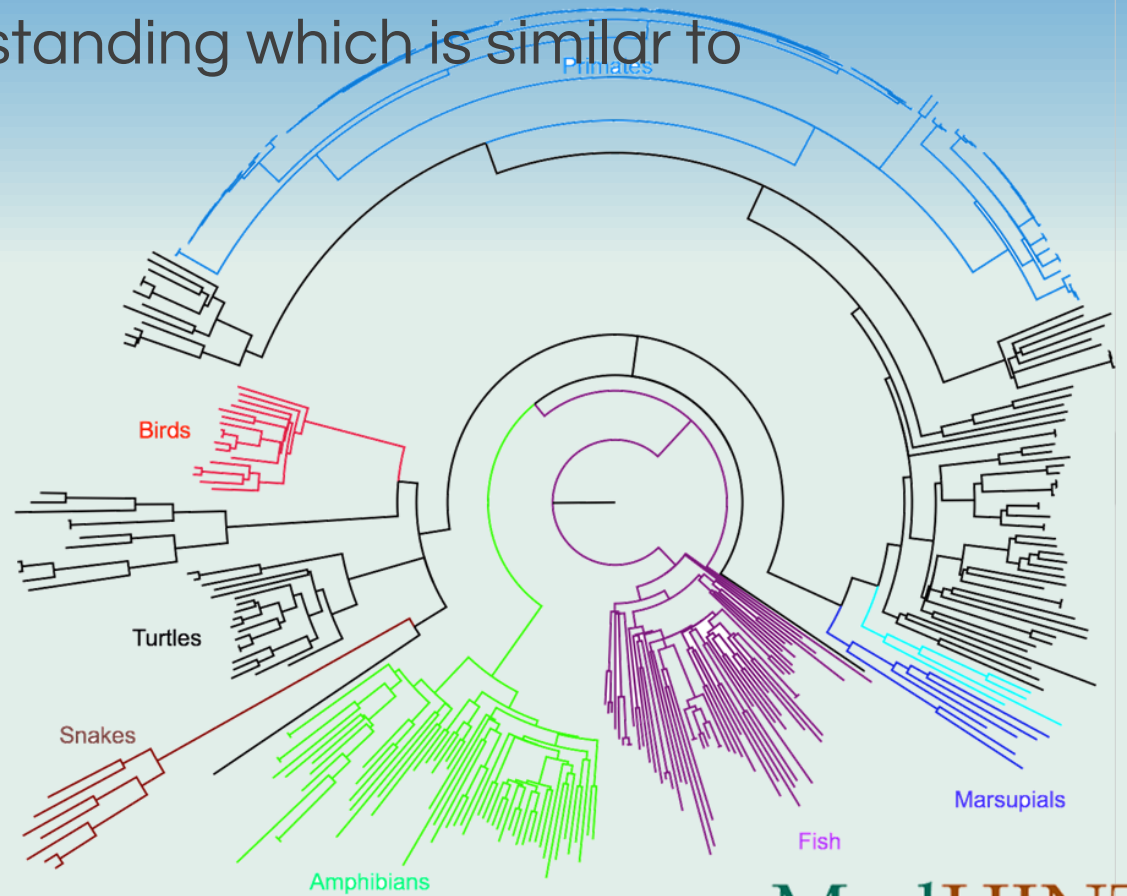
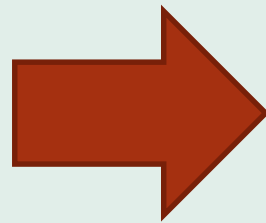
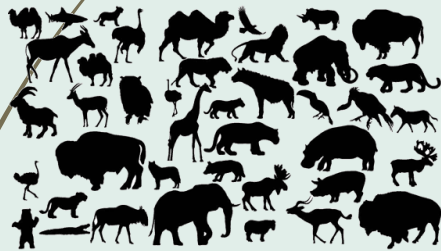


**MedHINTS**  
ARISE AWAKE EVOLVE



# What Software Does - Classification

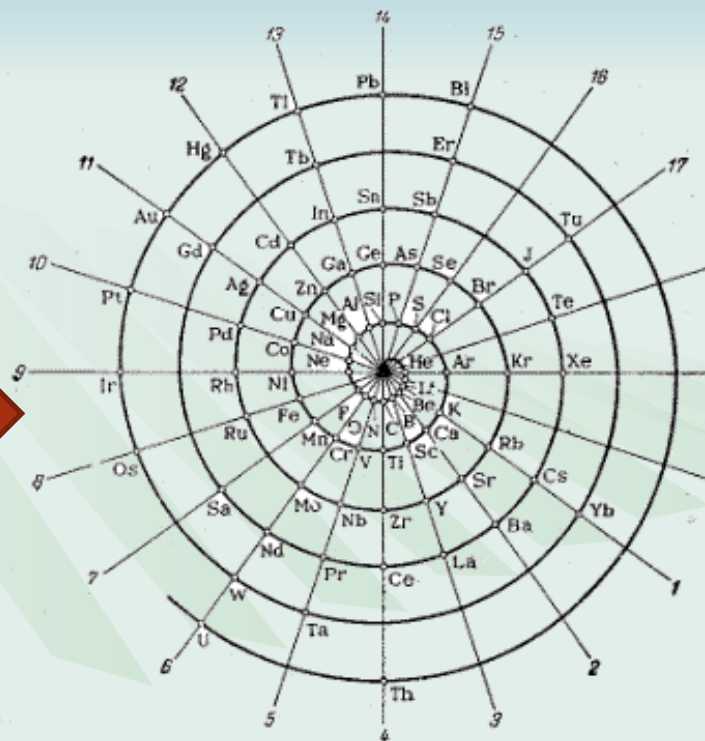
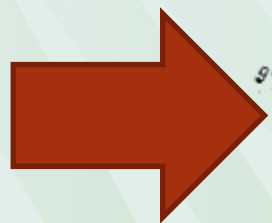
New software to incorporate Medicine classifications of animal kingdom a pattern, to follow both the Zoological and Homoeopathic Evolutionary understanding which is similar to Periodic Table in chemistry.





# What Software does – Classification Cont..

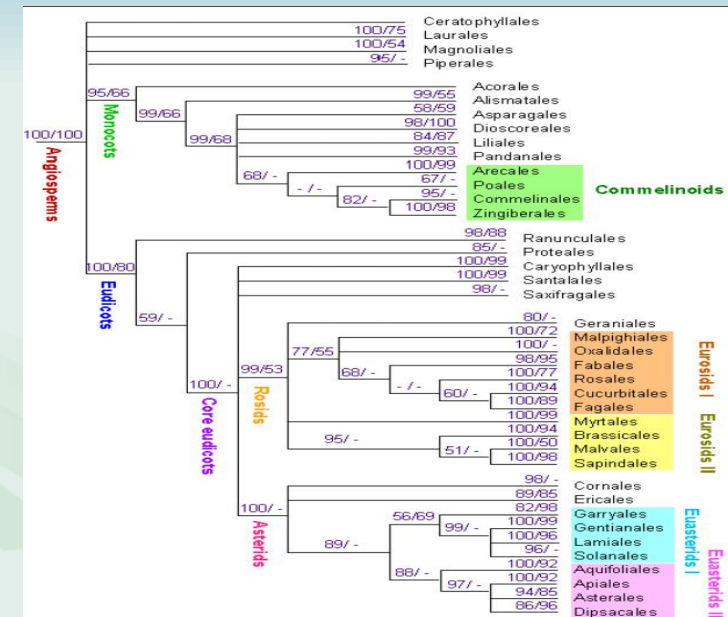
New software to incorporate Medicine classifications of minerals to follow the Periodic table and its chemical and physical characteristics which are to be included and the Evolutionary understanding of Periodic Table need to be brought in.



1	H 1.008 Hydrogen	2	He 4.003 Helium
3	Li 6.941 Lithium	4	Be 9.012 Beryllium
5	B 10.811 Boron	6	C 12.011 Carbon
7	N 14.007 Nitrogen	8	O 15.999 Oxygen
9	F 18.998 Fluorine	10	Ne 20.18 Neon
11	Na 22.99 Sodium	12	Mg 24.305 Magnesium
13	Al 26.982 Aluminum	14	Si 28.086 Silicon
15	P 30.974 Phosphorus	16	S 32.066 Sulfur
17	Cl 35.453 Chlorine	18	Ar 39.948 Argon
19	K 39.098 Potassium	20	Ca 40.078 Calcium
21	Sc 44.956 Scandium	22	Ti 47.88 Titanium
23	V 50.942 Vanadium	24	Cr 51.996 Chromium
25	Mn 54.938 Manganese	26	Fe 55.847 Iron
27	Co 58.933 Cobalt	28	Ni 58.693 Nickel
29	Cu 63.546 Copper	30	Zn 65.39 Zinc
31	Ga 69.723 Gallium	32	Ge 72.61 Germanium
33	As 74.922 Arsenic	34	Se 78.96 Selenium
35	Br 79.904 Bromine	36	Kr 83.8 Krypton
37	Rb 85.468 Rubidium	38	Sr 87.62 Strontium
39	Y 88.906 Yttrium	40	Zr 91.224 Zirconium
41	Nb 92.906 Niobium	42	Mo 95.94 Molybdenum
43	Tc (98) Technetium	44	Ru 101.07 Ruthenium
45	Rh 102.906 Rhodium	46	Pd 106.42 Palladium
47	Ag 107.868 Silver	48	Cd 112.41 Cadmium
49	In 114.818 Indium	50	Sn 118.71 Tin
51	Sb 121.75 Antimony	52	Te 127.6 Tellurium
53	I 126.905 Iodine	54	Xe 131.29 Xenon
55	Cs 132.905 Cesium	56	Ba 137.327 Barium
57	La 138.905 Lanthanum	58	Ce 140.116 Cerium
59	Pr 140.908 Praseodymium	60	Nd 144.24 Neodymium
61	Pm (145) Promethium	62	Sm 150.36 Samarium
63	Eu 151.965 Europium	64	Gd 157.25 Gadolinium
65	Tb 158.925 Terbium	66	Dy 162.5 Dysprosium
67	Ho 164.930 Holmium	68	Er 167.26 Erbium
69	Tm 168.934 Thulium	70	Yb 173.04 Ytterbium
71	Lu 174.967 Lutetium	72	Hf 178.49 Hafnium
73	Ta 180.948 Tantalum	74	W 183.85 Tungsten
75	Re 186.207 Rhenium	76	Os 190.23 Osmium
77	Ir 192.22 Iridium	78	Pt 195.08 Platinum
79	Au 196.967 Gold	80	Hg 200.59 Mercury
81	Tl 204.383 Thallium	82	Pb 207.2 Lead
83	Bi 208.98 Bismuth	84	Po (209) Polonium
85	At (210) Astatine	86	Rn (222) Radon
87	Fr (223) Francium	88	Ra (226) Radium
89	Ac 227.028 Actinium	90	Th 232.038 Thorium
91	Pa 231.036 Protactinium	92	U 238.029 Uranium
93	Np 237.048 Neptunium	94	Pu 244.064 Plutonium
95	Am 243.061 Americium	96	Cm 247.07 Curium
97	Bk 247.07 Berkelium	98	Cf 251.08 Californium
99	Es 252.083 Einsteinium	100	Fm 257.10 Fermium
101	Md 288.10 Mendelevium	102	No 289.10 Nobelium
103	Lr 260.10 Lawrencium	104	Rg 272.10 Roentgenium

# What Software does – Classification Cont..

New software to incorporate Medicine classifications of Plant to follow the botanical classification and include the Evolutionary patterns along with the solved cases.



# Litmus Charts and Analytics

- Advanced analytics using the evolutionary mappings of the wiki data of medicines and machine learning from the cured cases become future system of homeopathy to serve the humanity in a better way with very high success rate.
- Litmus learns from each solved case and from proving of medicines. It builds its database scientifically on classified way and apply certain criteria on the evolutionary tables of medicines and indicate such key information in an organized way to the doctors while they are working on any new case.

# Registered Trust

- Caters to Medical Research Esp Cancer and HIV
- Registered trust ( Application under 12A/80G Accreditation by Income Tax Department under process)
- Focus Evolutionary Software development for Homeopathic doctors and researchers
- Establish and Maintain Charity hospitals

- Registration Number: KRI-4-00065-2016-17
- PAN Number: AAETM5392F

## Contact



- Phone: +91 7760813434
- Email: [medhintstrust@gmail.com](mailto:medhintstrust@gmail.com)
- Web : [www.medhints.org](http://www.medhints.org)



# Appeal

Change Can be brought by right intent, right action by  
right set of people.

Be generous to contribute towards Building a Holistic (non Invasive) Cancer  
Healing centre (Charity Hospital) at Bangalore, India.

A/C Name: "MedHINTS"

Bank: State Bank of India (SBI)

Bank address:

Richards Town, Bangalore, 560005, India

AC No: 35896771031

IFS Code : SBIN0002263